

ROAD INDEX

A AQUILLA BLVD. C3 AQUILLA RD. A1-B6 ALDENSHIRE DR. C4	I cont'	S SPENCER ST. B3-B4 STILLWELL RD. F3-G3 STONELEDGE DR. F1-F2 STONE SPRINGS DR. C4
B BERKSHIRE DR. B3	J	T TAYLORWELLS RD. C1-D6 TURNER DR. B3
C CHARDON WINDSOR RD. D1-G2 CLARIDON TROY RD. D1-D6 CORNELIA DR. B3 CLARIDON PARK DR. D-2	K KILE RD. F4-G1	U
D DURKEE RD. F6-G6	M MAYFIELD RD. A4-C4 MEADOWWOOD DR. B2 MERRITT RD. A6	V
E ENSIGN RD. D5-F5	N	W
F FOREST RD. E4-E6	O OLD STATE RD. E1-G6	X
G GOREDON DR. B3	P	Y
H HALL RD. C2-D3	Q	Z
I	R	

- ① CLARIDON LOCAL SCHOOL
- ② PLEASANT HILL COUNTY HOME
- ③ EAST CLARIDON METHODIST CHURCH
- ④ GEALUGA COUNTY COMM. HOSPITAL
- ⑤ THE FIRST CONGREGATIONAL CHURCH
- ⑥ CLARIDON TOWN HALL
- ⑦ CHRISTIAN MISSIONARY ALLIANCE CH.
- ⑧ U.S. POST OFFICE (CLARIDON)
- ⑨ CLARIDON CENTER CEMETERY
- ⑩ GEALUGA COUNTY SAFETY CENTER
- ⑪ EAST CLARIDON CEMETERY
- ⑫ GEALUGA COUNTY WELFARE DEPT.
- ⑬ WEST CLARIDON CEMETERY
- ⑭ CEMETERY
- ⑮ CEMETERY
- ⑯ CEMETERY

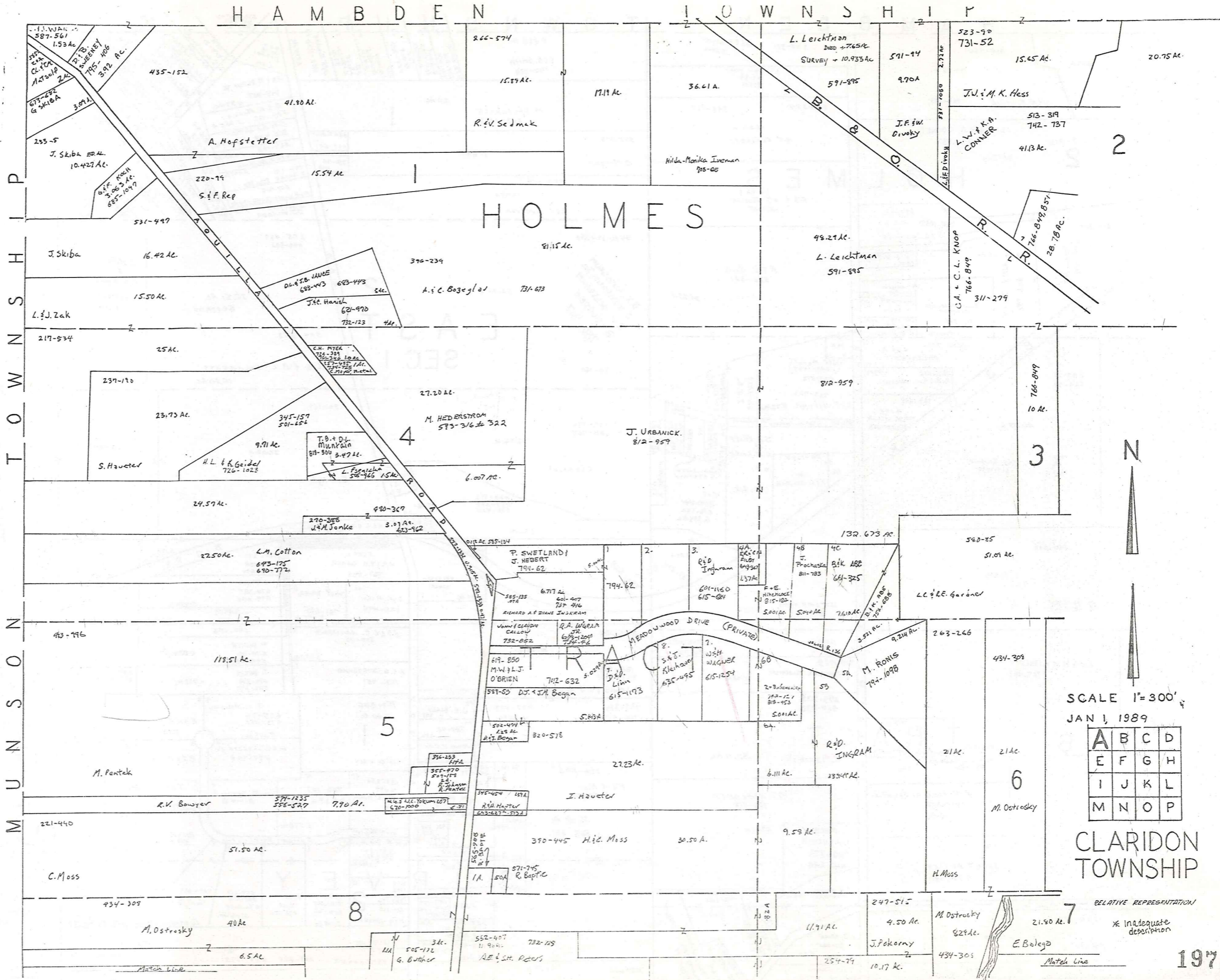
CLARIDON TOWNSHIP

SCALE - 1" = 2000'

ROBERT L. PHILLIPS,
GEALUGA COUNTY ENGINEER

- UNPAVED ROAD
- RAILROAD
- PAVED ROAD
- - - TOWNSHIP LINE





SCALE 1"=300'
 JAN 1, 1989

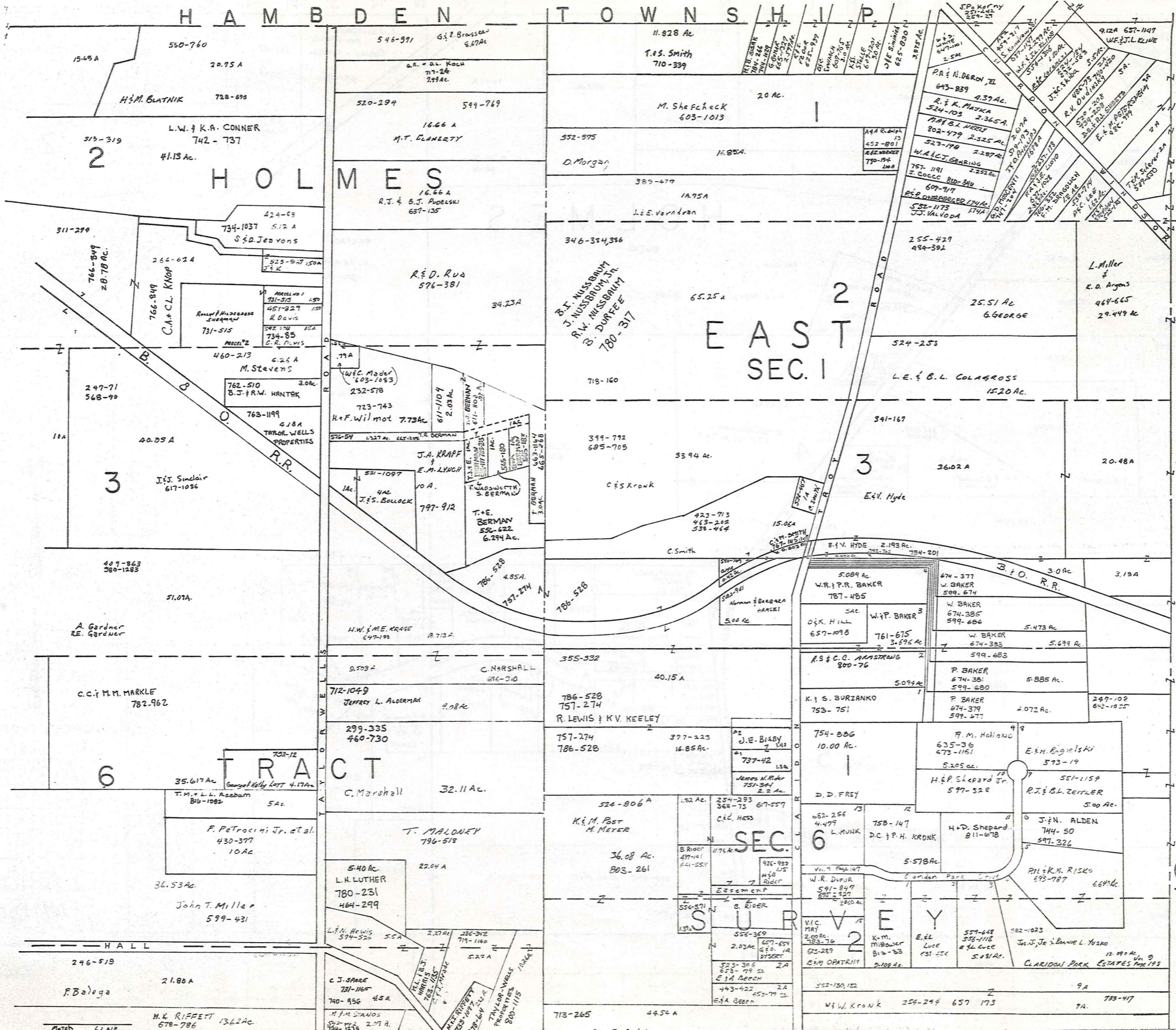
A	B	C	D
E	F	G	H
I	J	K	L
M	N	O	P

CLARIDON TOWNSHIP

RELATIVE REPRESENTATION

* Inadequate depiction

H A M B D E N T O W N S H I P

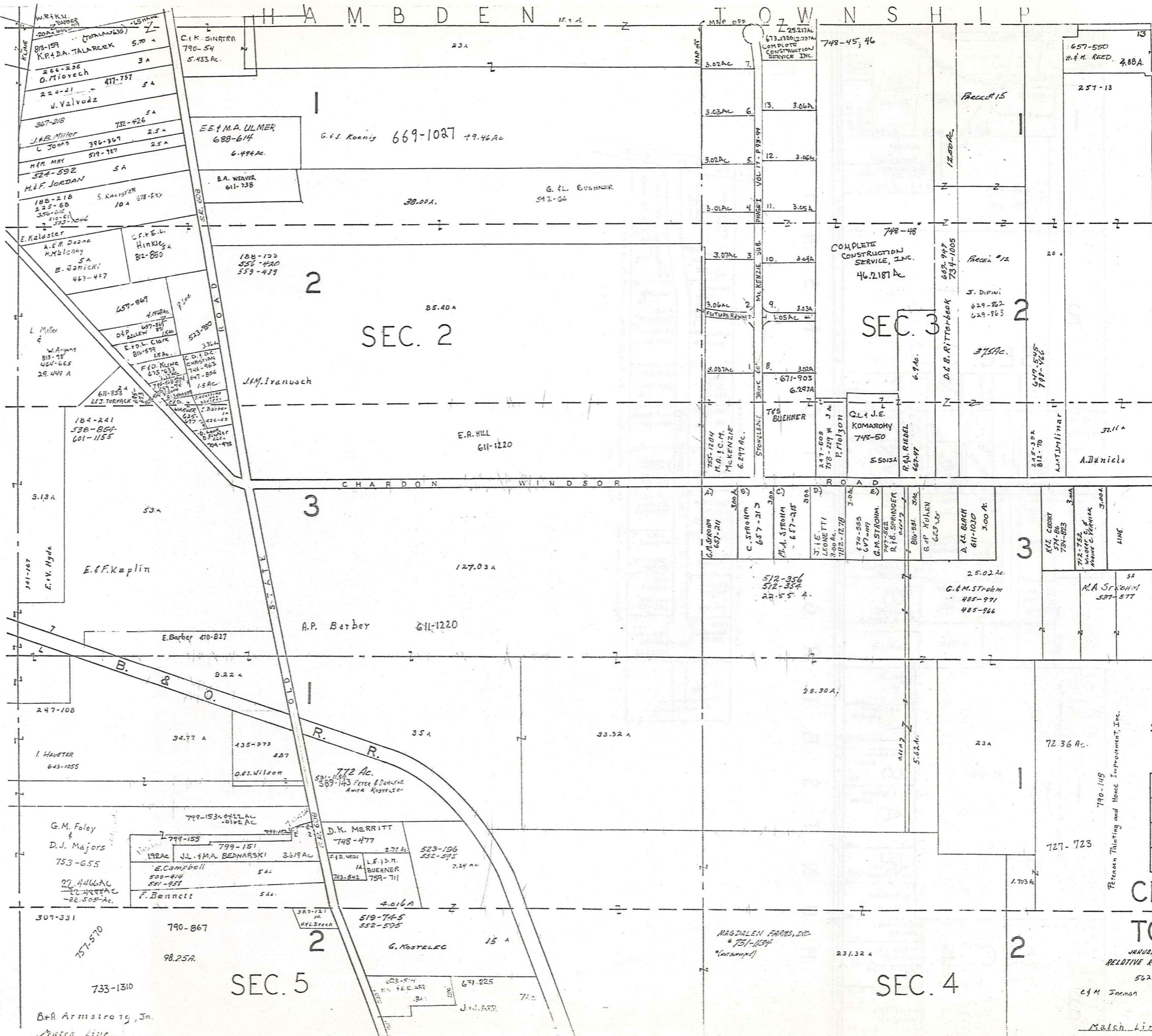


SCALE 1"=300'
JAN 1, 1989

A	B	C	D
E	F	G	H
I	J	K	L
M	N	O	P

CLARIDON TOWNSHIP

RELATIVE REPRESENTATION
* Inadequate description



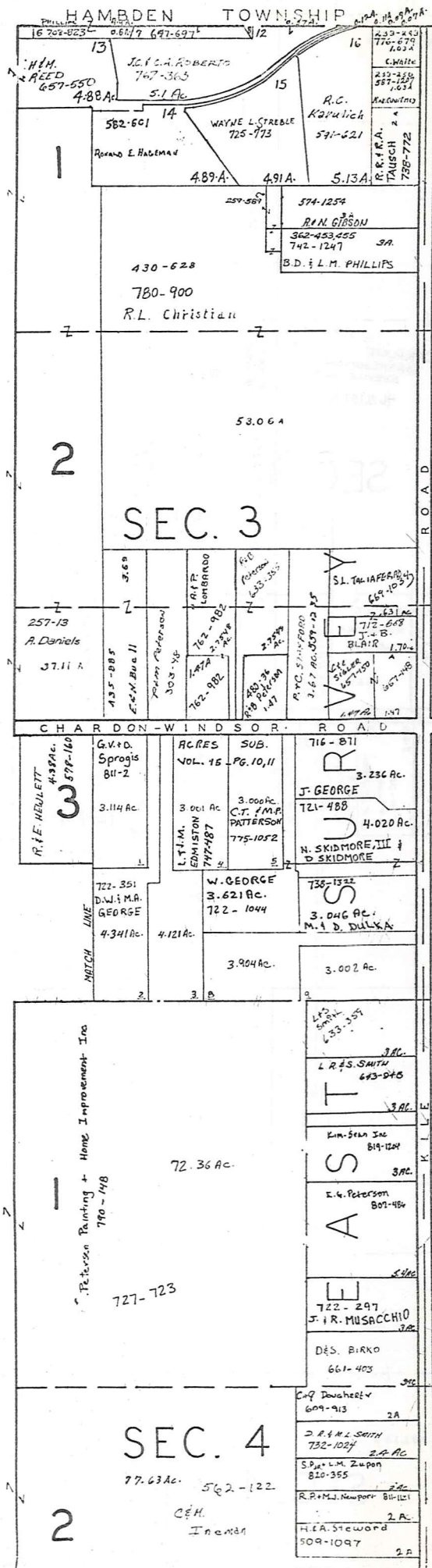
SCALE 1" = 300'

A	B	C	D
E	F	G	H
I	J	K	L
M	N	O	P

CLARIDON TOWNSHIP

JANUARY 1, 1929
RELATIVE REPRESENTATION

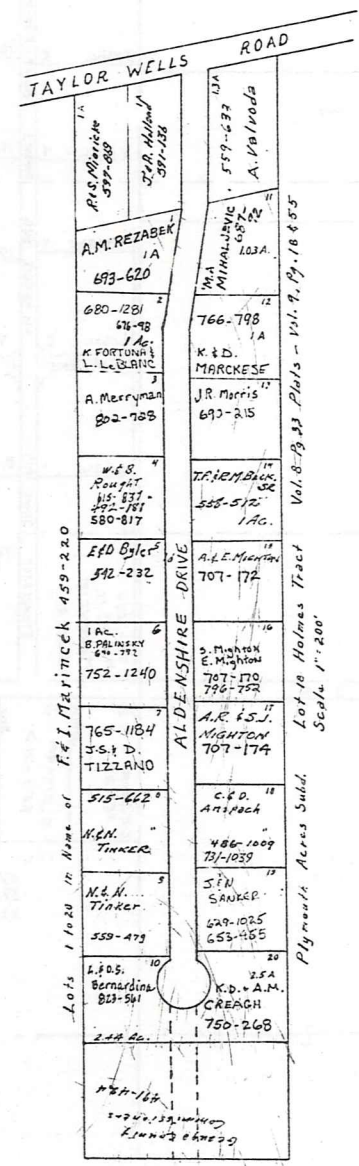
562-122
C.M. Enman * Inadequate description



H A M D E N T O W N S H I P

T O W N S H I P

H U N T S B U R G



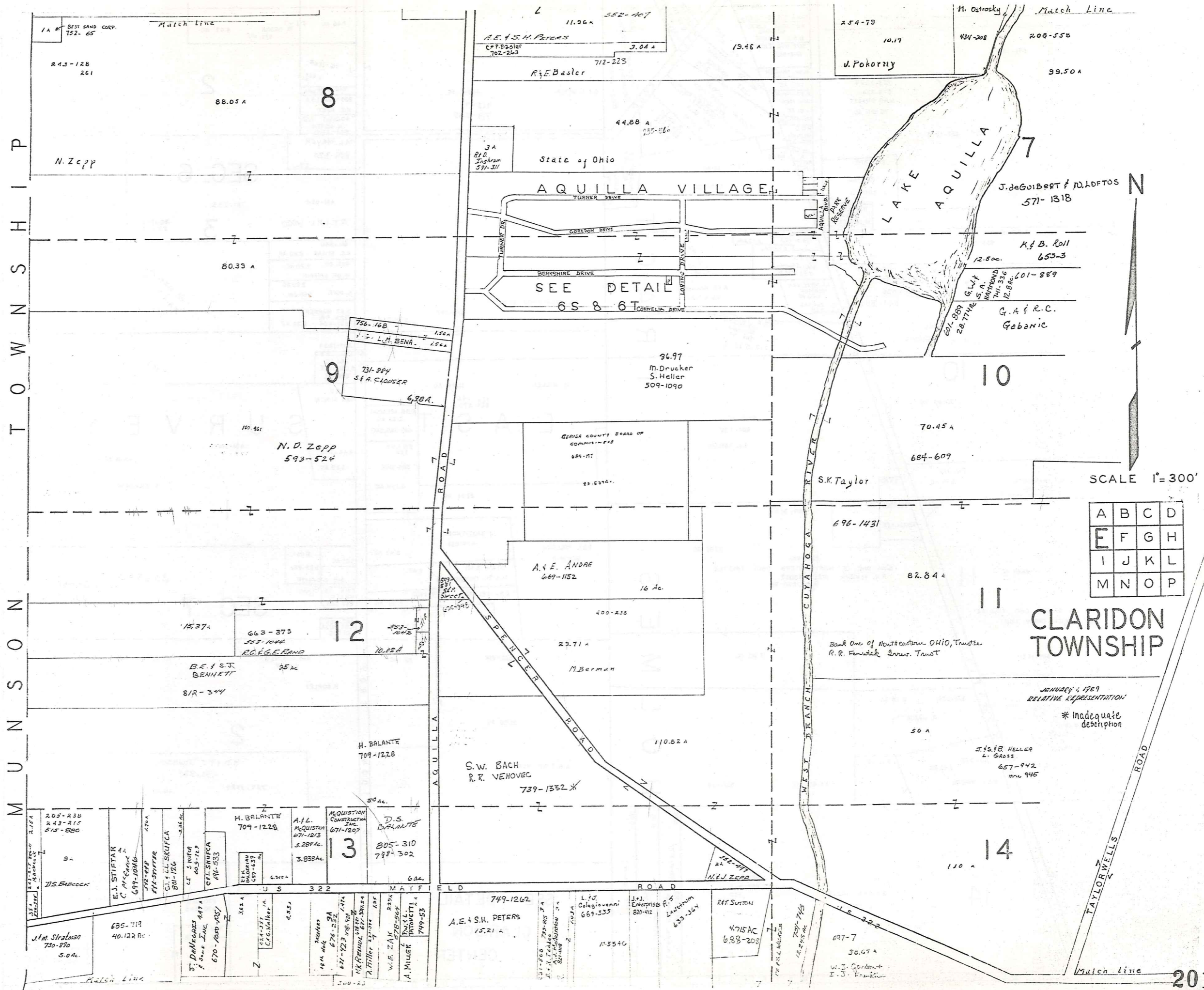
SCALE 1"=300'

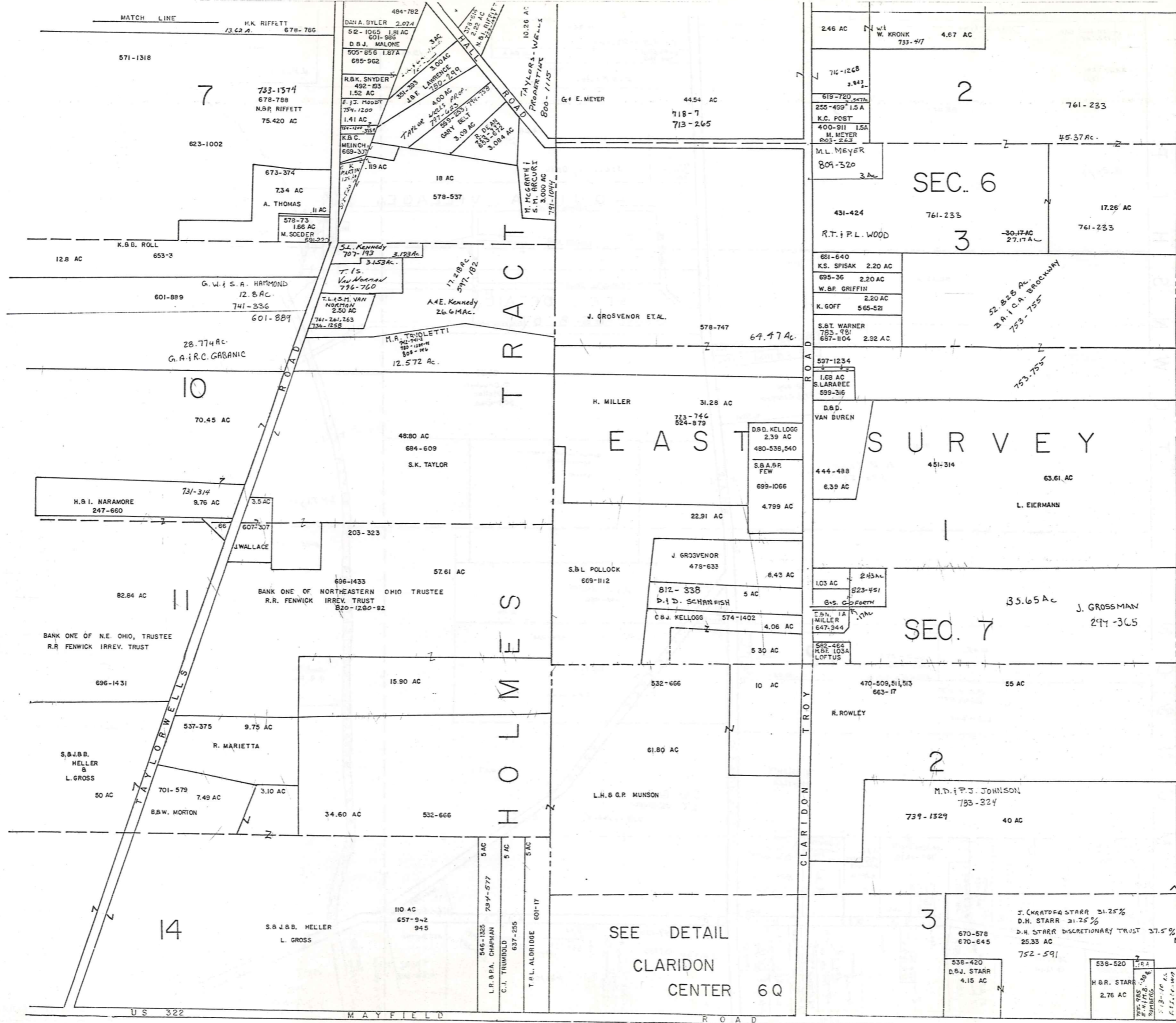
* Inadequate description

JANUARY 1, 1989
RELATIVE REPRESENTATION

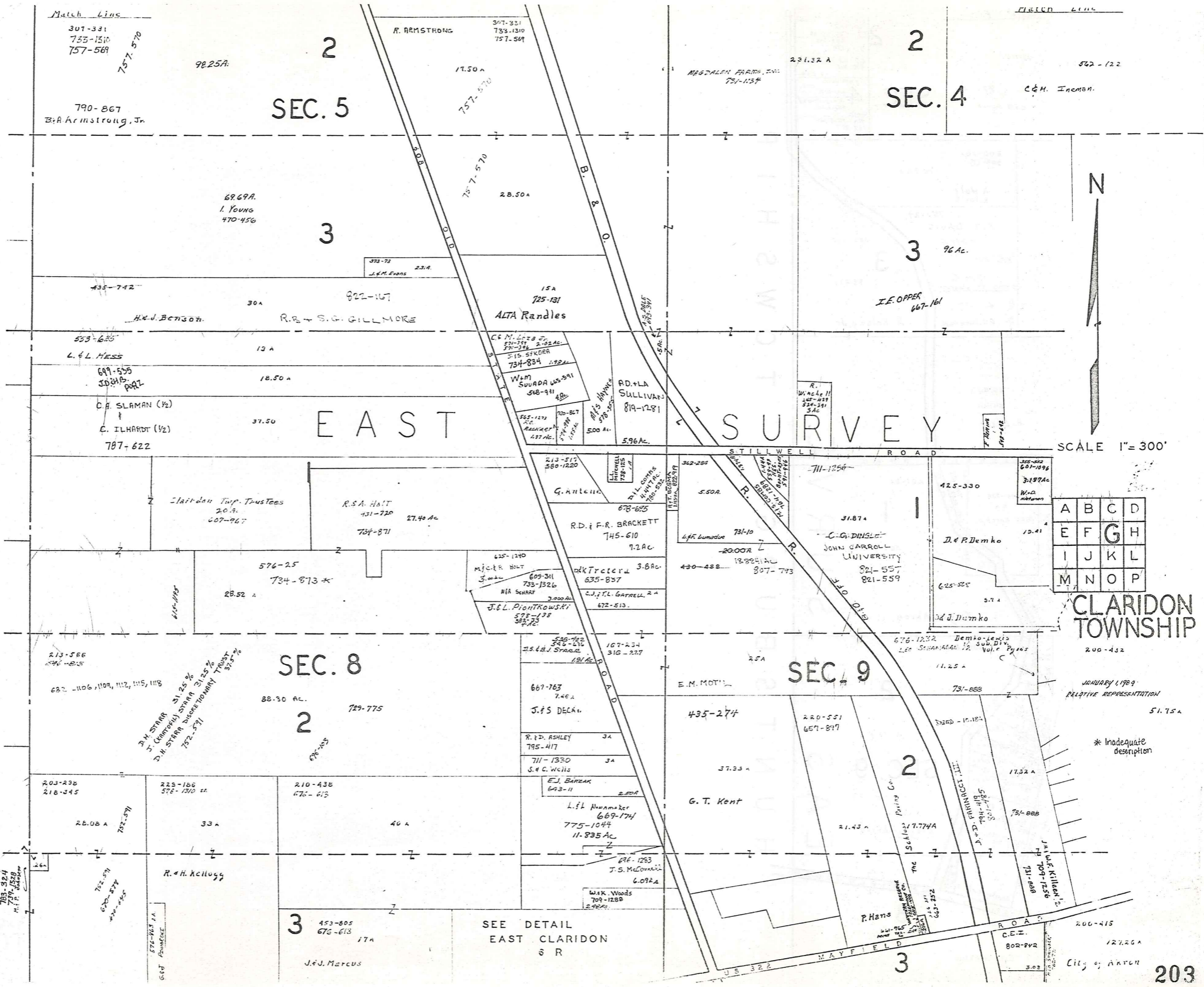
A	B	C	D
E	F	G	H
I	J	K	L
M	N	O	P

CLARIDON TOWNSHIP





A	B	C	D
E	F	G	H
I	J	K	L
M	N	O	P



SCALE 1" = 300'

A	B	C	D
E	F	G	H
I	J	K	L
M	N	O	P

CLARIDON TOWNSHIP

JANUARY, 1989
RELATIVE REPRESENTATION

* Inadequate description

SEE DETAIL
EAST CLARIDON
& R

Match Line

562-122

77. Ac.

C. H. Heman

SEC. 4

502-576 204.
 720-1062 204.
 F.S. + N.E. PEYCHER
 653-445
 J. LIOTTA 204.
 G.J. + S.B. Roodhouse
 808-543 204.
 J. + A.M. HESS 204.
 516-202
 S. + V.J. RUFFY
 537-1250
 204.
 M. + V. MEADOWS
 643-48
 2.26 Ac.

200-101
509-615

16.72 A

A. Wolf
R. Post

750-29

J. T. DAVIS
8,397 A

3

516-29

4.00 Ac

601-289
5 A
O. B. WARNER

R. Kelsey, Jr

20.60 A

62-1033
H. Esser

STILLWELL ROAD

J. + P. Demko
125-530
1722

496-328
9 A
G. C. Karch Jr.

201-34

50 A

City of Akron

200-432

2

51.75 A

SEC. 9

City of Akron

Vol. 6 - P. 16
Lewis' Sub. Div.

Demko-Lewis

322

200-415

3

127.26 A

City of Akron

EAST SURVEY HUNTSBURG TOWNSHIP



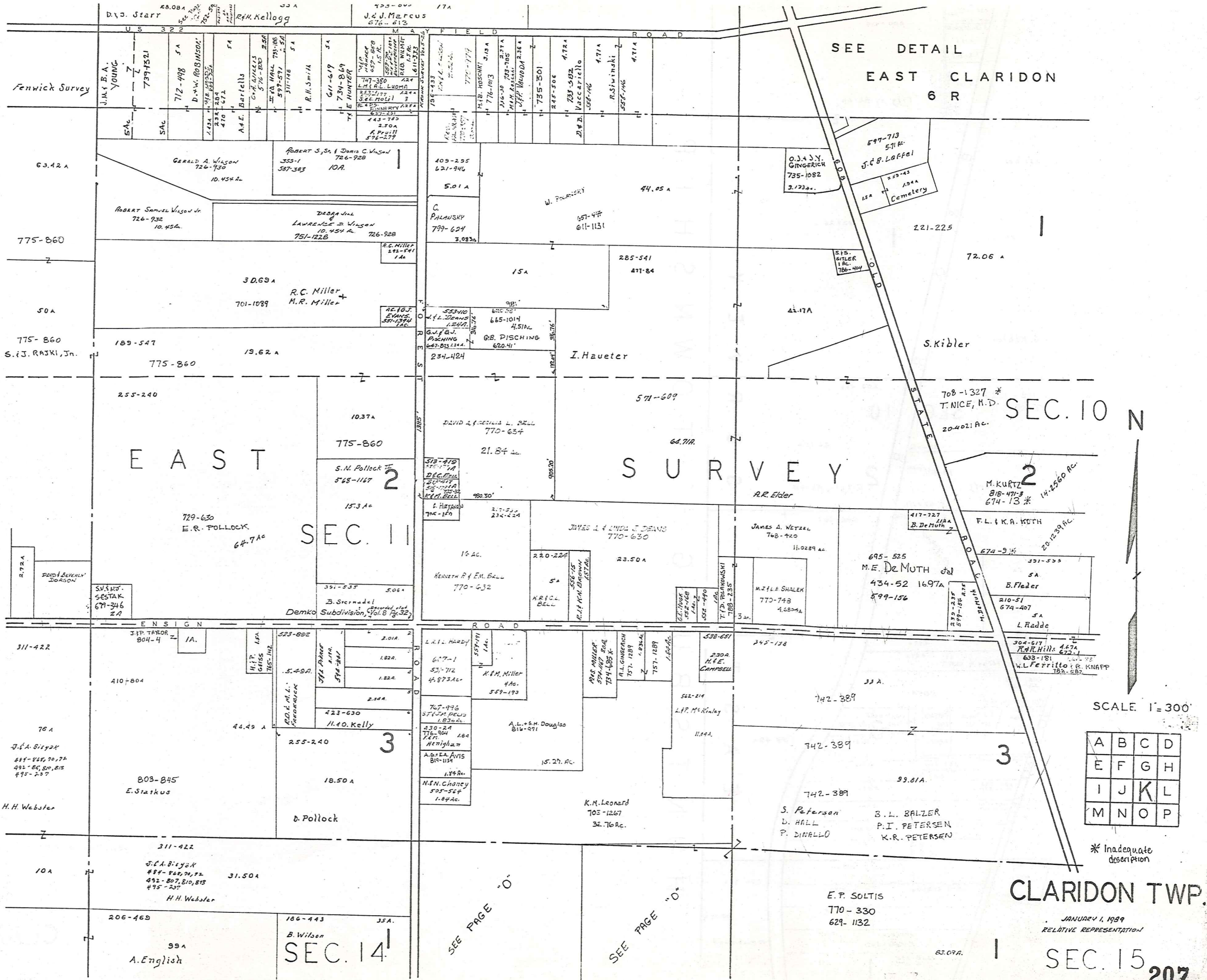
SCALE 1"=300'

JANUARY 1909
RELATIVE REPRESENTATION

* INADEQUATE
DESCRIPTION

A	B	C	D
E	F	G	H
I	J	K	L
M	N	O	P

CLARIDON
TOWNSHIP



SEE DETAIL
EAST CLARIDON
6 R

SEC. 10

SEC. 11

CLARIDON TWP.

JANUARY 1, 1999
RELATIVE REPRESENTATION

SEC. 15

A	B	C	D
E	F	G	H
I	J	K	L
M	N	O	P

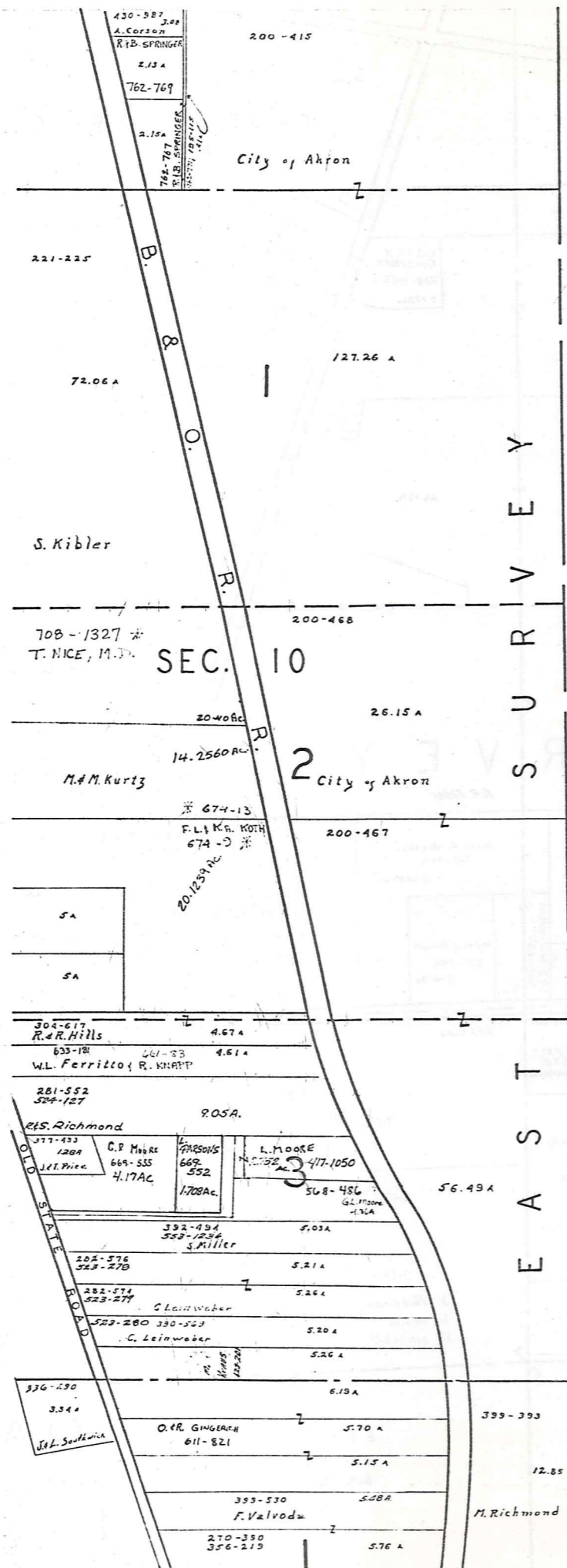
* Inadequate description

SEE PAGE "O"

SEE PAGE "O"

E.P. SOLTIS
770-330
629-1132

83.09A



S U R V E Y
 T O W N S H I P
 H U N T S B U R G



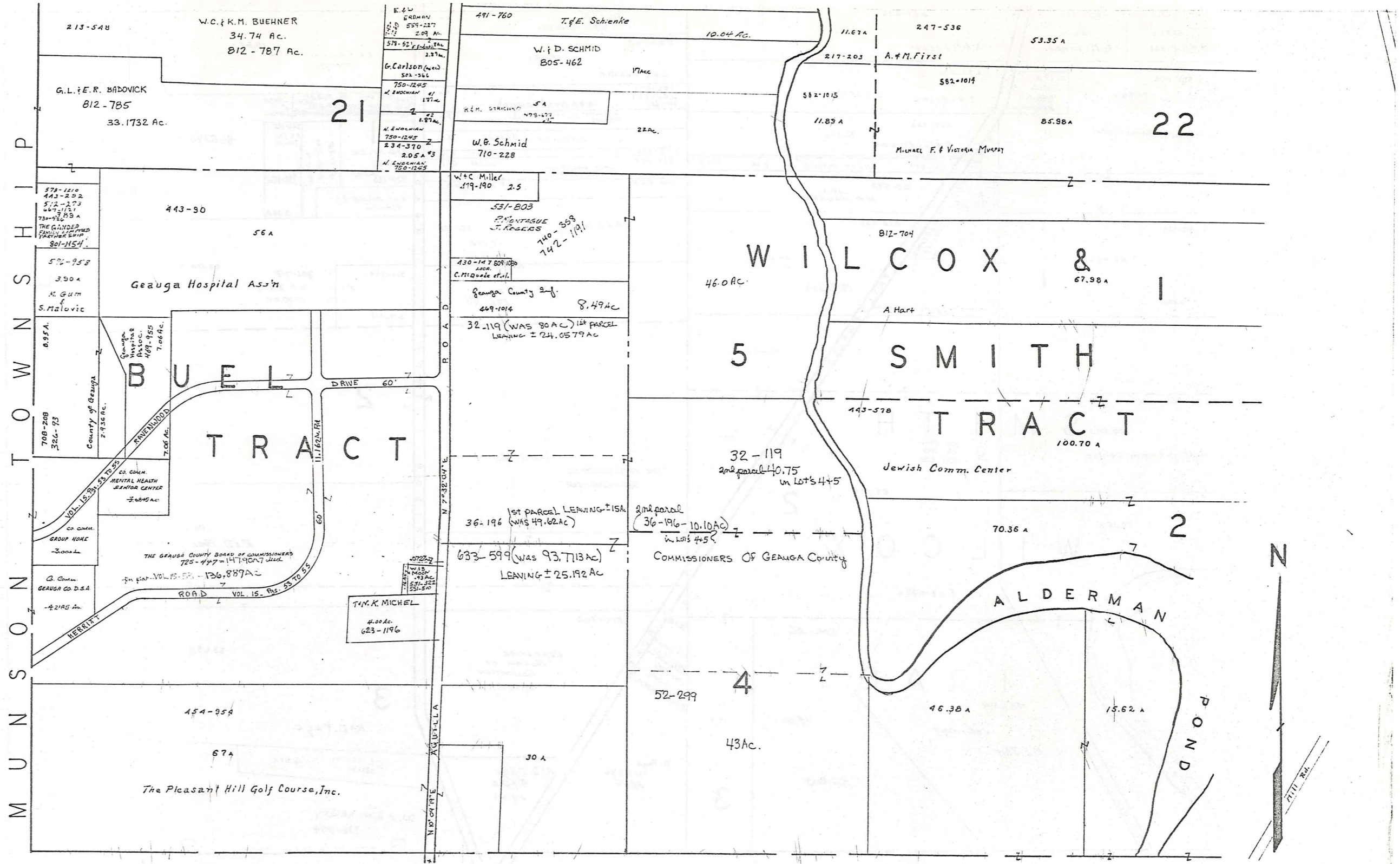
* inadequate description

SCALE 1" = 300'

JANUARY 1, 1929
 RELATIVE REPRESENTATION

A	B	C	D
E	F	G	H
I	J	K	L
M	N	O	P

CLARIDON TWP.



BURTON TOWNSHIP

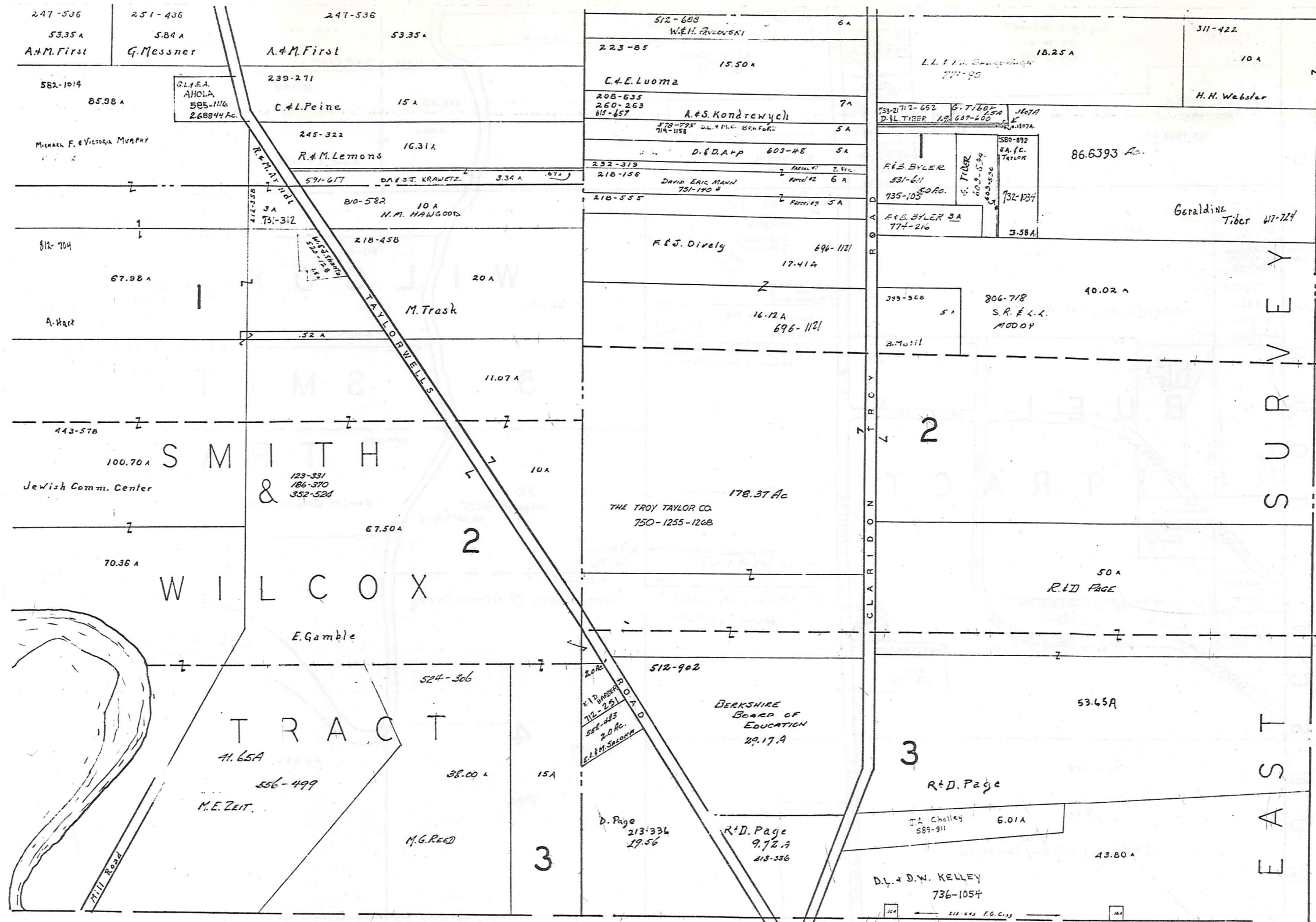
SCALE 1" = 300'

JANUARY 1, 1959
RELATIVE REPRESENTATION

* Inadequate description

A	B	C	D
E	F	G	H
I	J	K	L
M	N	O	P

CLARIDON TWP

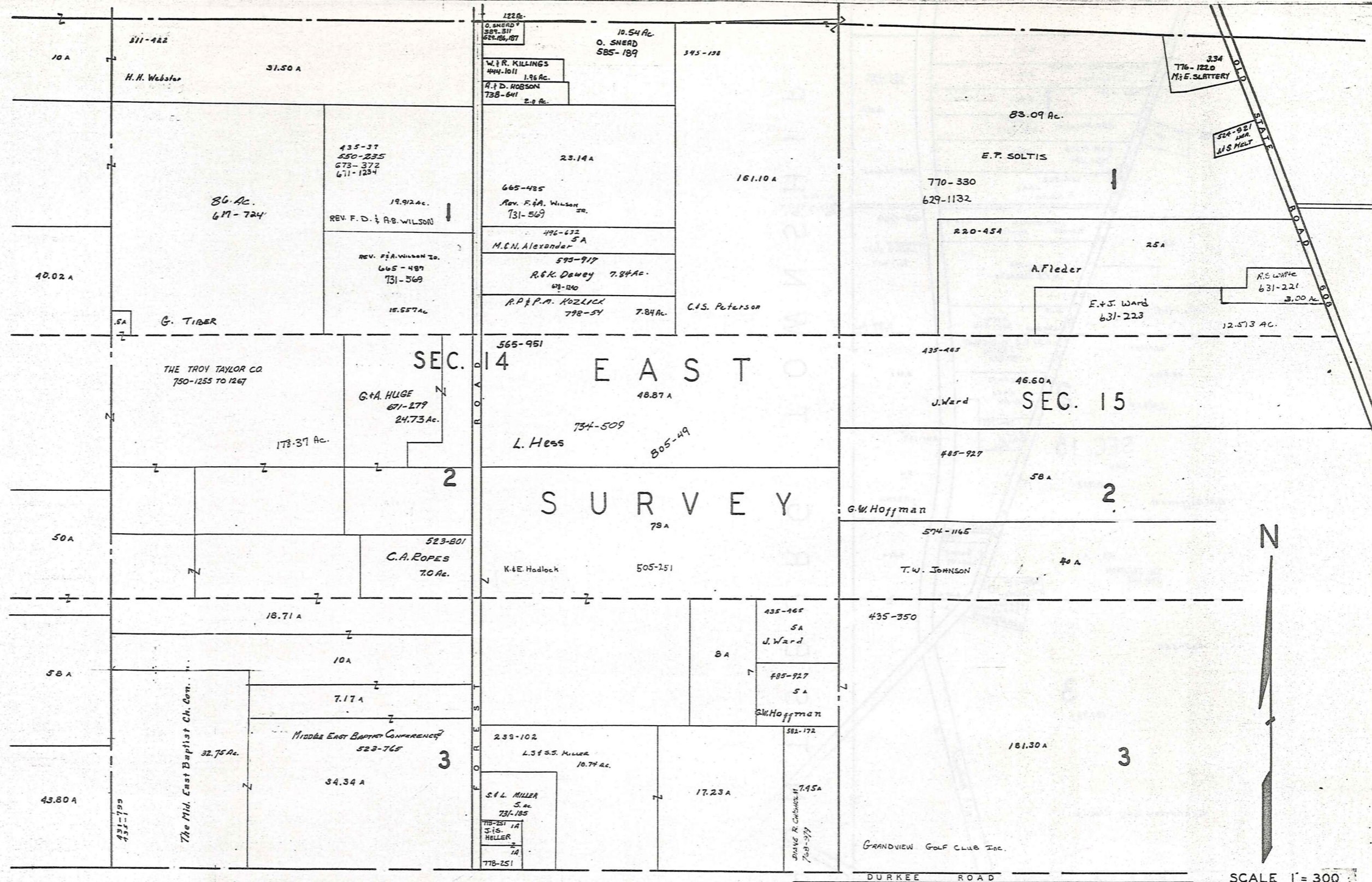


BURTON NEWBURGH TOWNSHIP

A	B	C	D
E	F	G	H
I	J	K	L
M	N	O	P

CLARIDON TWP.

JANUARY 1, 1929
RELATIVE REPRESENTATION



SEC. 14 EAST OLIN SURVEY

SEC. 15

2

2

3

3



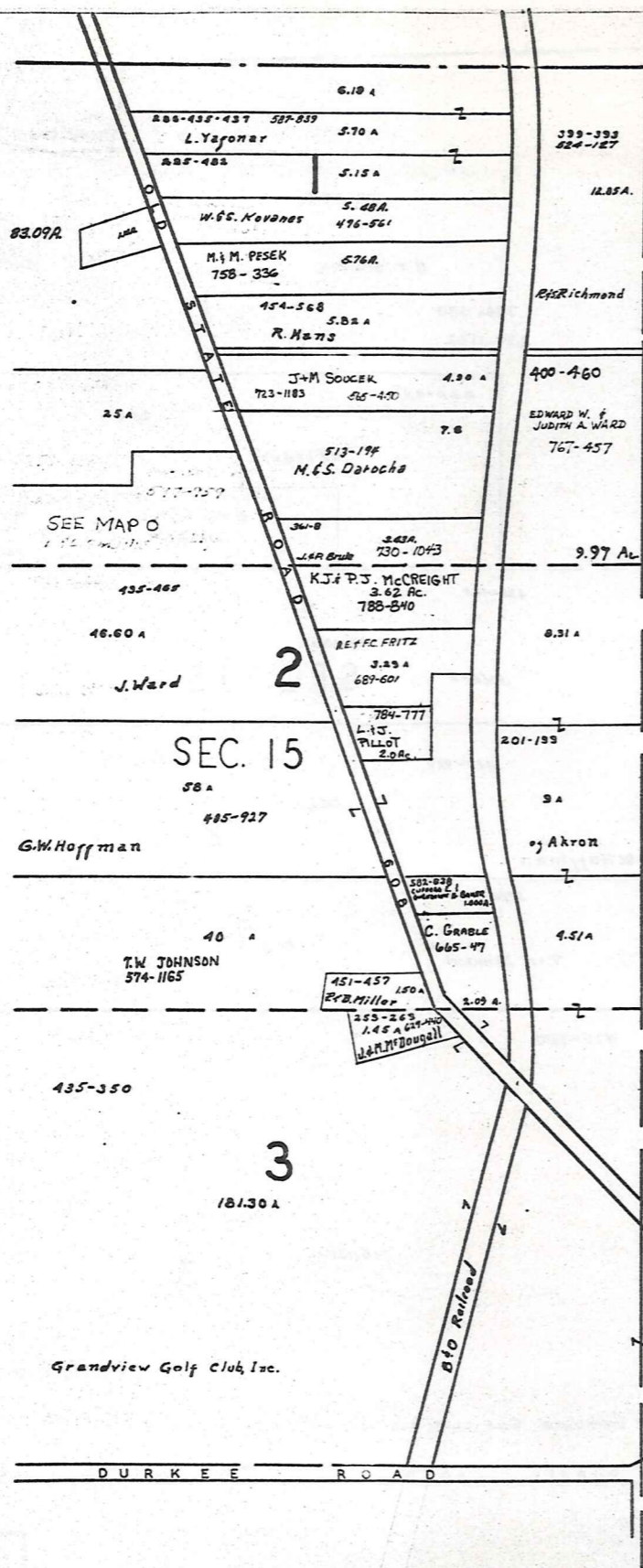
SCALE 1" = 300'

A	B	C	D
E	F	G	H
I	J	K	L
M	N	O	P

* Inadequate description

CLARIDON TWP.

JANUARY 1, 1989
RELATIVE REPRESENTATION



H U N T S B U R G T O W N S H I P

BURTON TWP.



SCALE 1" = 300'

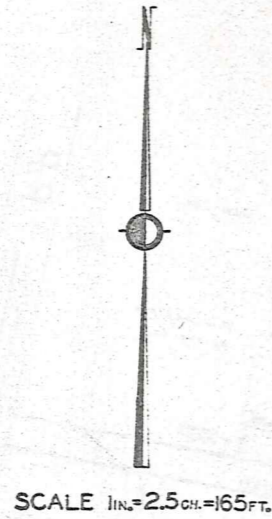
* Inadequate description

JANUARY 1, 1989
RELATIVE REPRESENTATION

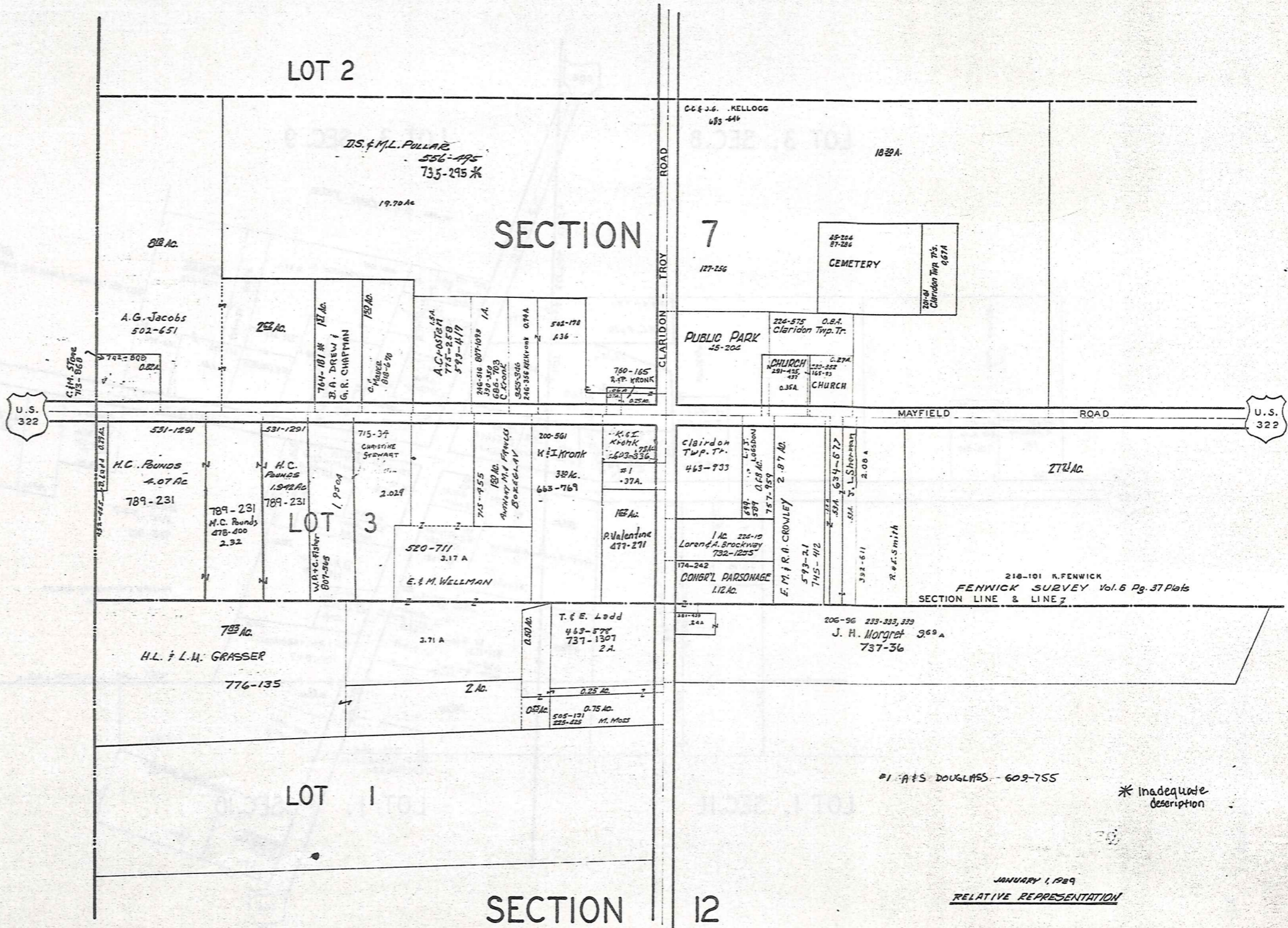
A	B	C	D
E	F	G	H
I	J	K	L
M	N	O	P

CLARIDON TWP.

CLARIDON T.P. [CENTER]



JAN 1, 1985



SCALE 1"=30 FT.

SEE 6-S-CTR.

57	703-693	J. Pierce	.110A
58	500-17	E.E. Cermes	.108A
59	531-727	E.E. Cermes	.104A
60	179-381	J.B. & L. CHAPARD	.103A
61	524-79	E.E. Cermes	.103A
62	524-672		.103A
63	G.A. Davis		.103A
64	484-742		.103A
65	105-402	J.J. ZEMA, ET AL	.103A
66	D.E. LERCH	717-1047	.103A
67			.103A
68			.103A
69	653-174	C.E. Gauthier	.103A
70	R. ALEX-SOU	635-686	.102A
71			.102A
72			.102A
73	A. CAIN	427-692	.102A
74	A. CAIN		.102A
75	415-923	V. BIASIO	.102A
76	102-600	H.C. & H.M. HECKER	.102A
77	631-1104	U.S. & F.R. Baumgartner	.102A
78	54 MARY	187-793	.102A
79			.102A
80	D.A. LOFTUS		.092A
81			.092A
82			.103A

108	303-781	L. B. GREENUE	800-1128	.100A
107	71-371	A. GREENUE	496-797	.102A
106	E. BEIFVS	763-1051		.104A
105				.104A
104	763-1051			.104A
103	762-644	C. R. HARTER, JR.		.104A
102				.104A
101				.104A
100	410-99			.104A
99	350-189	F.M. Mance		.104A
98	224-204	S.VARGO		.104A
97				.104A
96	American Housing Trust II	819-684		.104A
95				.104A
94	675-354	S.E. L. WAGO		.104A
93				.104A
92				.104A
91				.104A
90	G. DYNES	645-767		.104A
89				.104A
88				.104A
87				.104A
86				.104A
85				.092A
84	233-249	L. ZINNER		.092A
83				.115A
82				.105A

233	649-20	THE ADMINISTRATIVE	785-1119	.107A	233A
232	452-76	G. Cellill	762-849	.107A	232A
231	762-849			.106A	231A
230	418-180	E.A. Solka		.106A	
229	603-400	R.R. ADROS		.106A	229A
228				.105A	228A
227	749-912			.105A	227A
226	749-912	F. J. & S.M. STROMMEIER		.105A	226A
225	F. AS. STROMMEIER	653-769		.105A	225A
224	J.E. DUDON	675-944		.104A	224A
223				.104A	223A
222				.104A	222A
221	425-1037	R. SHARP		.104A	221A
220				.103A	220A
219				.103A	219A
218				.103A	218A
217				.103A	217A
216				.102A	216A
215	635-1050	C.H. MENDERICKS, JR.		.102A	215A
214	185-354	J.A. TRAVERSE JR		.102A	214A
213	285-1048	TARRANTINO		.101A	213A
212	251-241	S.B. J. CENTA		.101A	212A
211	245-508	S.B. J. CENTA		.101A	211A
210				.098A	
209				.092A	
208				.103A	
207				.105A	

TURNER DRIVE 40'

GOREDON DRIVE 40'

BOULEVARD

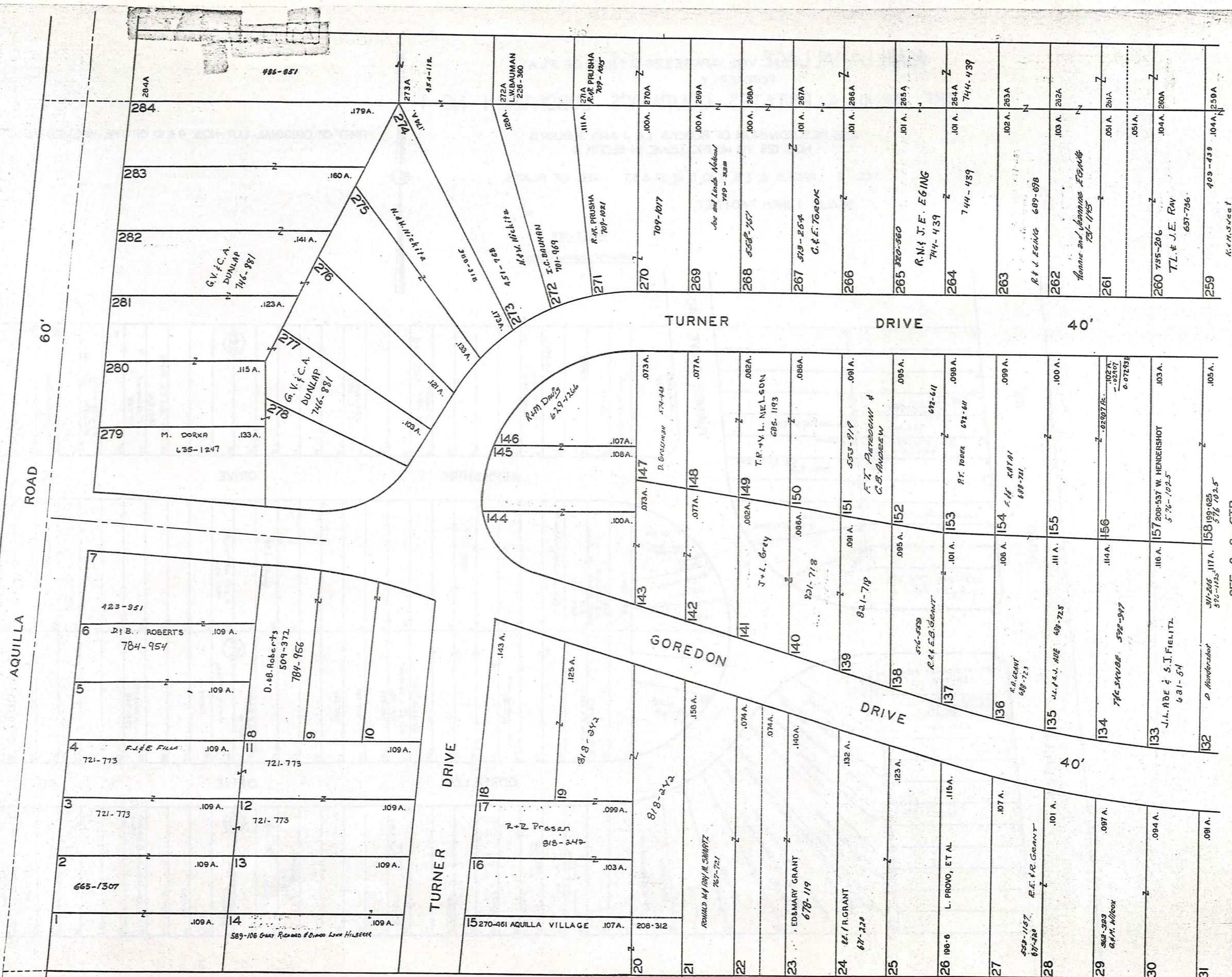
LAKE AQUILLA SUBDIVISION NO. 1 & LAKE AQUILLA SUBDIVISION NO. 1 ADDITION VOL. 1 PGS 50 & 51 REC OF PLATS

LAKE AQUILLA SUBDIVISION NO. 1 ADDITION VOL. 4 PGS 23 & 24 REC OF PLATS

JAN 1, 1989 RELATIVE REPRESENTATION

* Inadequate description

SCALE 1in=30ft.



LAKE AQUILLA SUBDIVISION NO.1 & LAKE AQUILLA SUBDIVISION NO.1 ADDITION VOL.1 PGS 50, 53 REC. OF PLATS VOL. 4 PGS 23 & 24 REC. OF PLATS

NOW AQUILLA VILLAGE VOL. 4 PAGES 26-27 REC. OF PLATS

JANUARY 1, 1969 RELATIVE REPRESENTATION

* Inadequate description

AQUILLA VILLAGE VOL. 4, PAGES 26-27 REC. OF PLATS
 FORMERLY
LAKE AQUILLA ESTATES COMPANY'S SUBDIVISION NO. 1

AND RESUBDIVISION OF BLOCKS I & J AND SUBLOTS
 NOS. 125 TO 141 INCLUSIVE IN BLOCK D

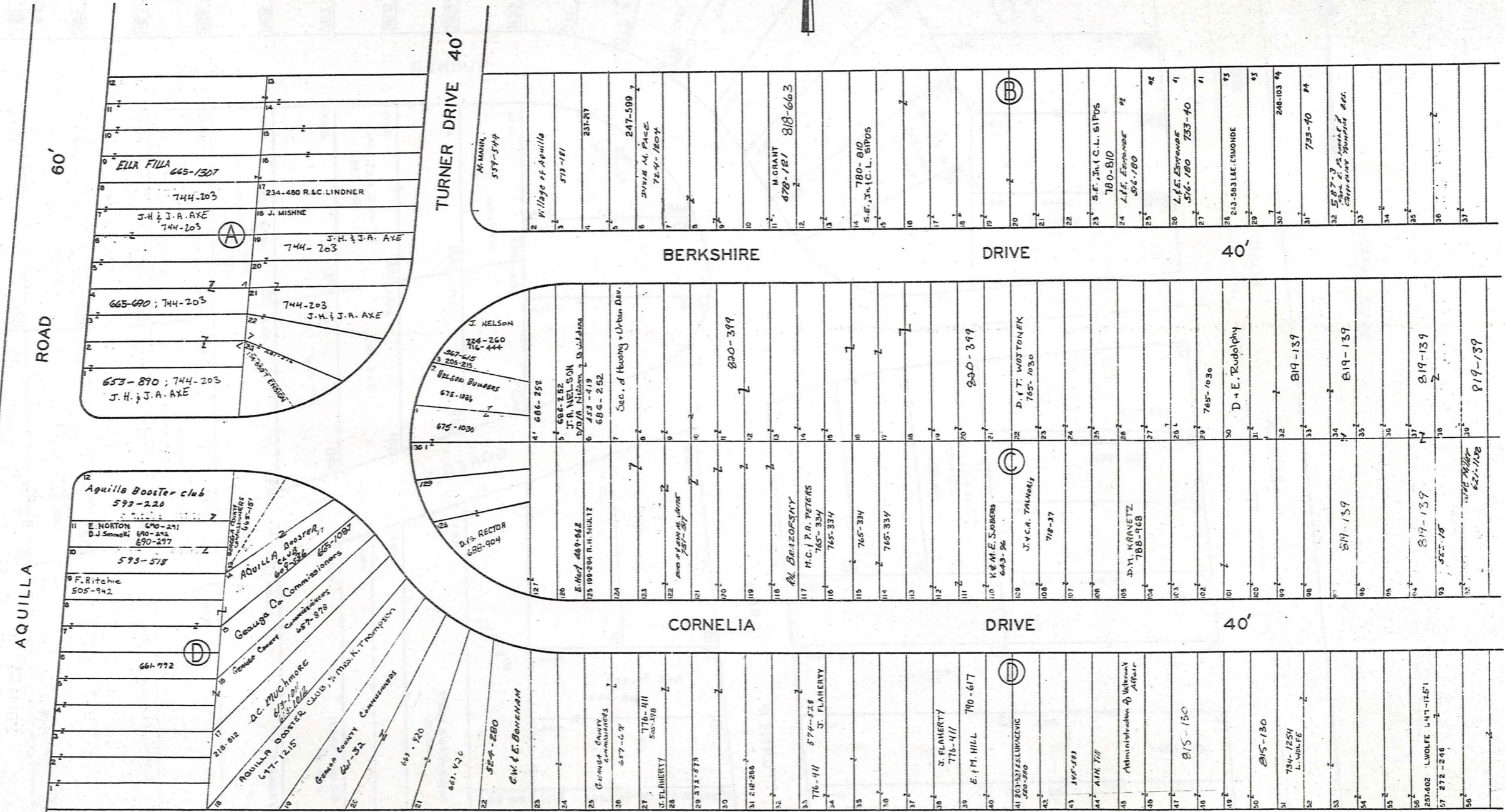
VOL. 2 PAGES 6, 7, 8, 9, 10, 11, 12, 19 & 33 REC. OF PLATS

SCALE 1 INCH = 40 FEET

PART OF ORIGINAL LOT NOS. 9 & 10 OF THE HOLMES TRACT CLARIDON TOWNSHIP



JAN. 1, 1989
 RELATIVE REPRESENTATION



SEE 6-T-2

* Inadequate description.

AQUILLA VILLAGE VOL. 4, PAGES 26-27 REC. OF PLATS
FORMERLY
LAKE AQUILLA ESTATES COMPANY'S SUBDIVISION NO. 1

AND RESUBDIVISION OF BLOCKS I & J AND SUBLOTS
NOS. 125 TO 141 INCLUSIVE IN BLOCK D

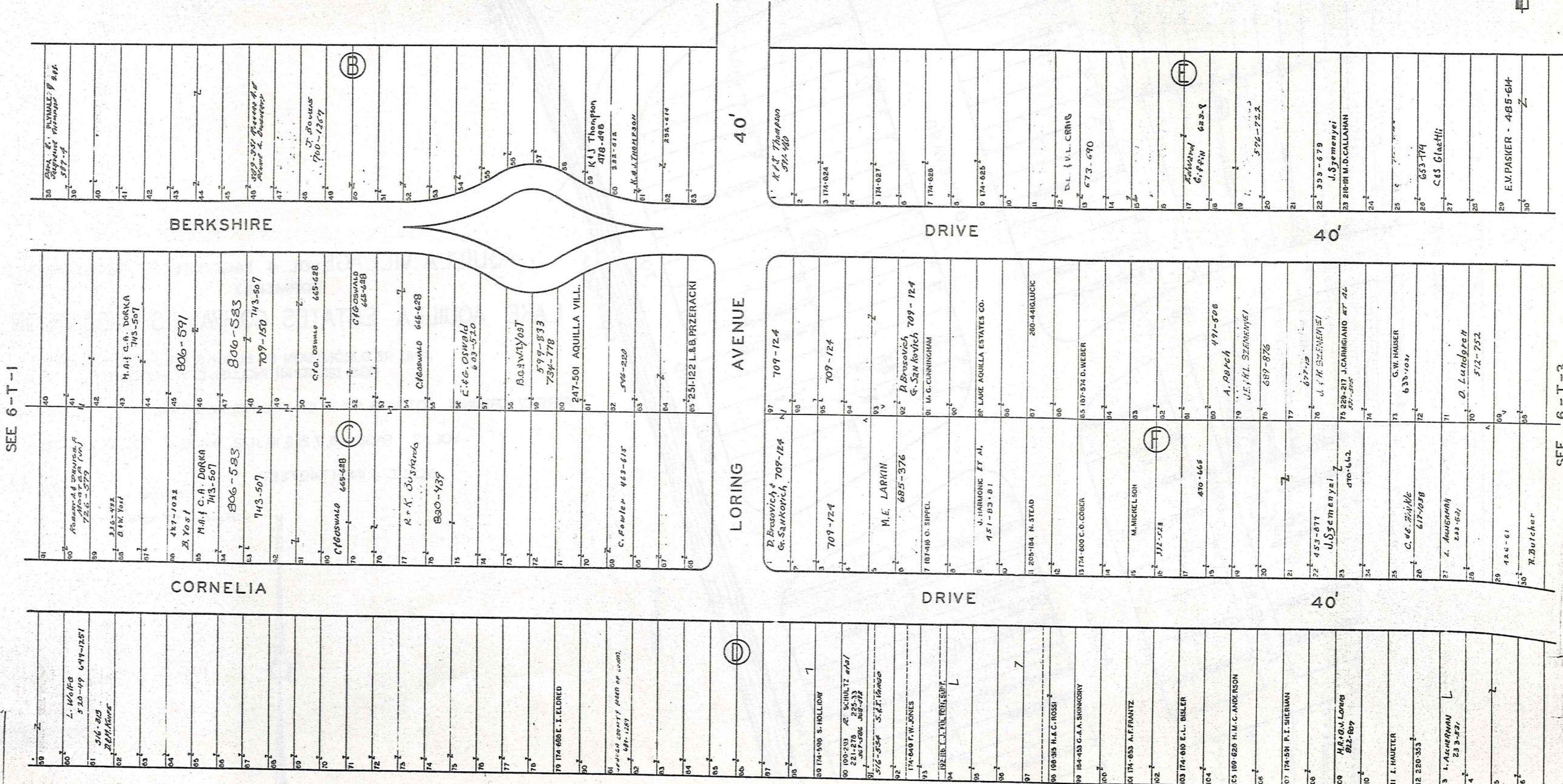
PART OF ORIGINAL LOT NOS. 9 & 10 OF THE HOLMES TRACT CLARIDON TOWNSHIP

VOL. 2 PAGES 6, 7, 8, 9, 10, 11, 12, 19 & 33 REC. OF PLATS

SCALE 1 INCH = 40 FEET

JAN. 1, 1989

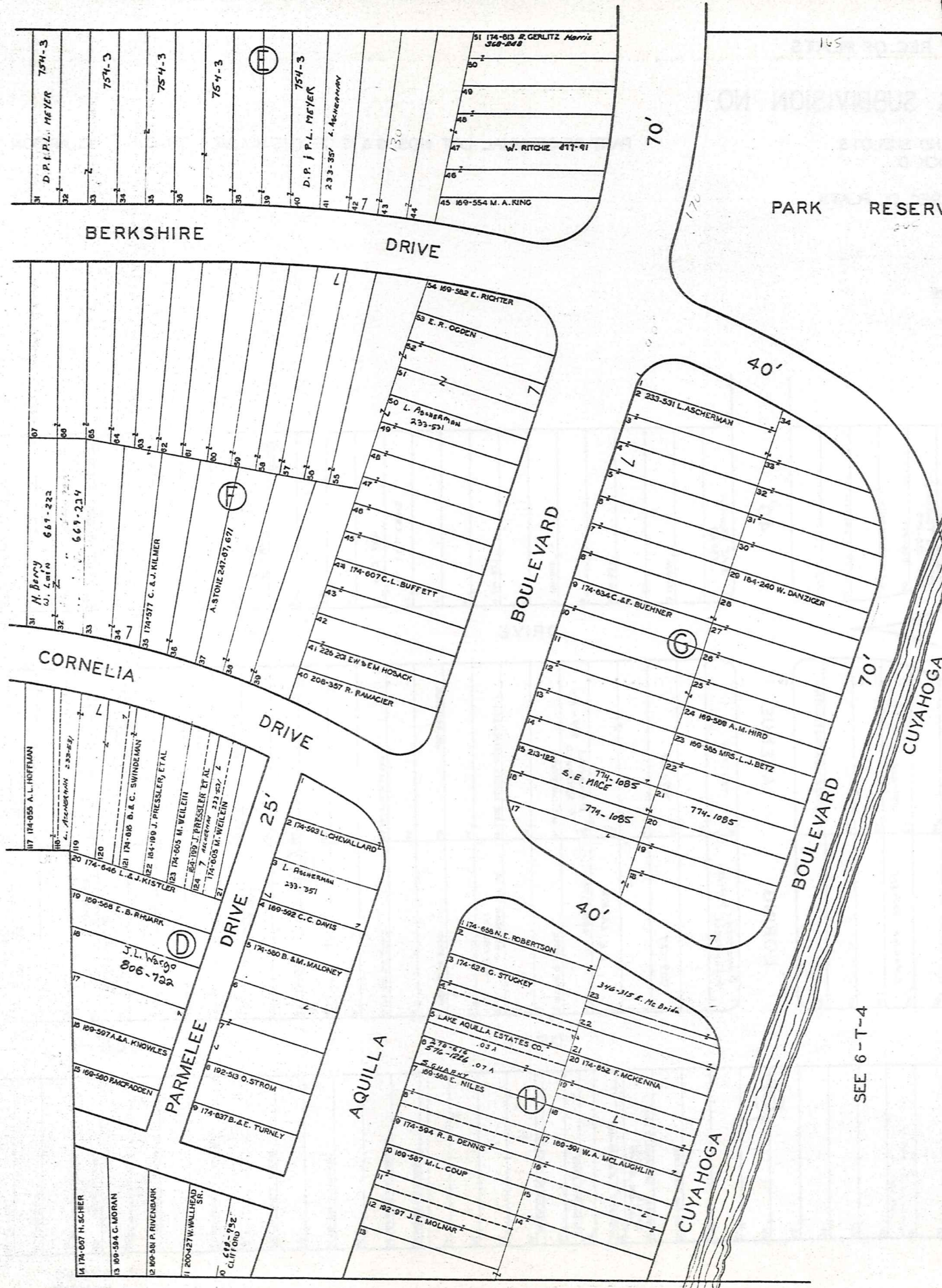
RELATIVE REPRESENTATION



SEE 6-T-1

SEE 6-T-3

* inadequate description



AQUILLA VILLAGE VOL. 4 PAGES 26-27 REC. OF PLATS
 FORMERLY
 LAKE AQUILLA ESTATES COMPANY'S SUBDIVISION NO. 1

AND RESUBDIVISION OF BLOCKS I & J AND SUBLOTS
 NOS. 125 TO 141 INCLUSIVE IN BLOCK D
 PART OF ORIGINAL LOT NOS. 9 & 10 OF THE HOLMES TRACT CLARIDON TOWNSHIP

VOL. 2 PAGES 6, 7, 8, 9, 10, 11, 12, 19 & 33 REC. OF PLATS
 SCALE 1 INCH=40 FEET

JAN 1, 1929
 RELATIVE REPRESENTATION



* Inadequate description

SEE 6-T-2

SEE 6-T-4

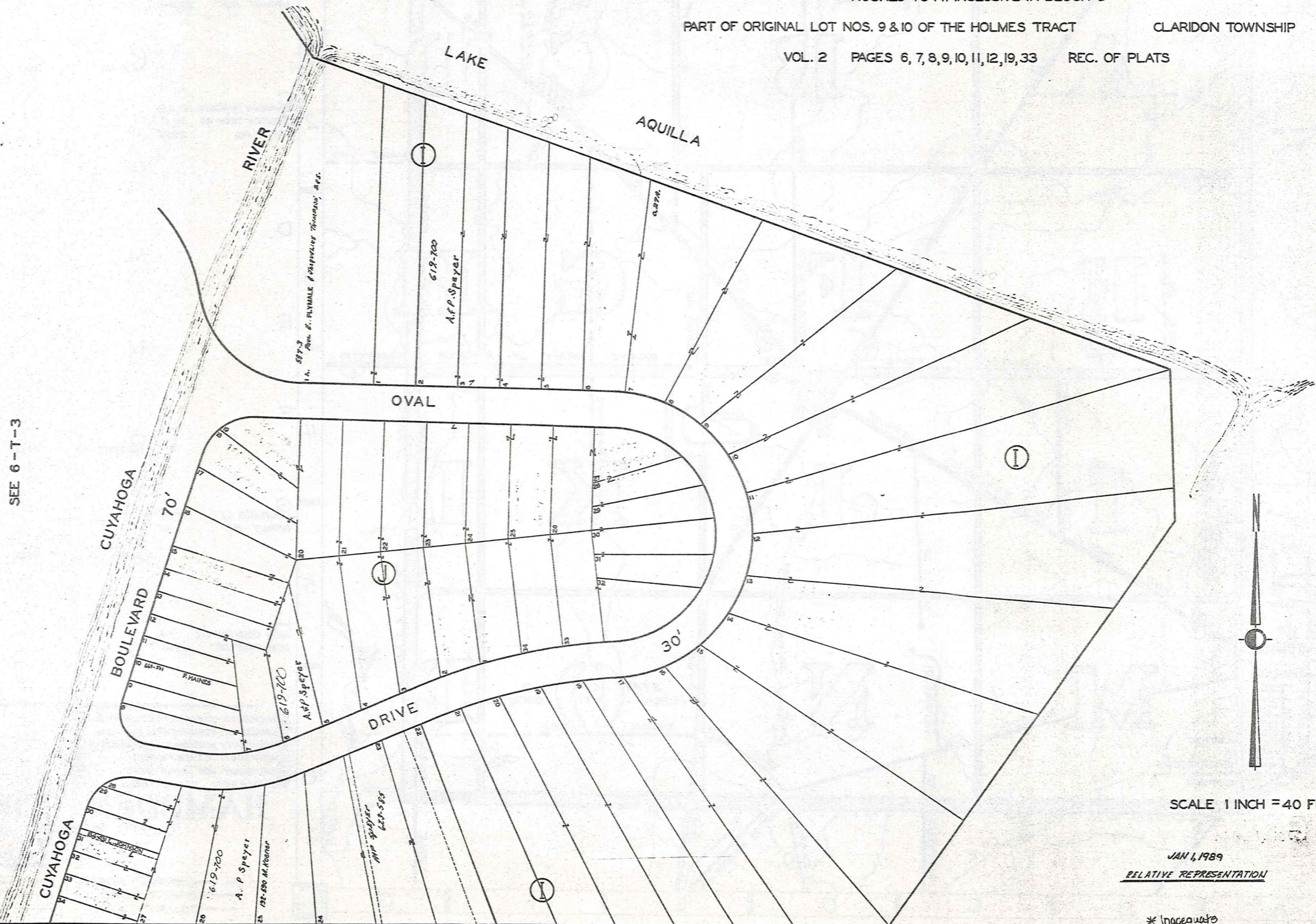
AQUILLA VILLAGE VOL. 4 PAGES 26-27 REC. OF PLATS
FORMERLY
LAKE AQUILLA ESTATES COMPANY'S SUBDIVISION NO. 1

AND RESUBDIVISION OF BLOCKS I & J AND SUBLOTS
NOS. 125 TO 141 INCLUSIVE IN BLOCK D

PART OF ORIGINAL LOT NOS. 9 & 10 OF THE HOLMES TRACT

CLARIDON TOWNSHIP

VOL. 2 PAGES 6, 7, 8, 9, 10, 11, 12, 19, 33 REC. OF PLATS



SEE 6-T-3

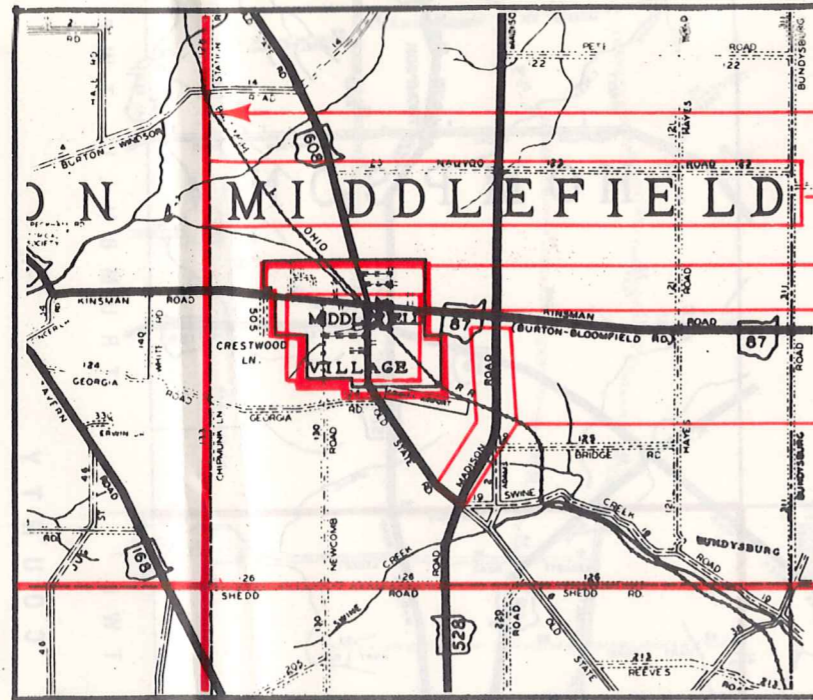
SCALE 1 INCH = 40 FEET

JAN 4, 1989
RELATIVE REPRESENTATION

* In accordance with description

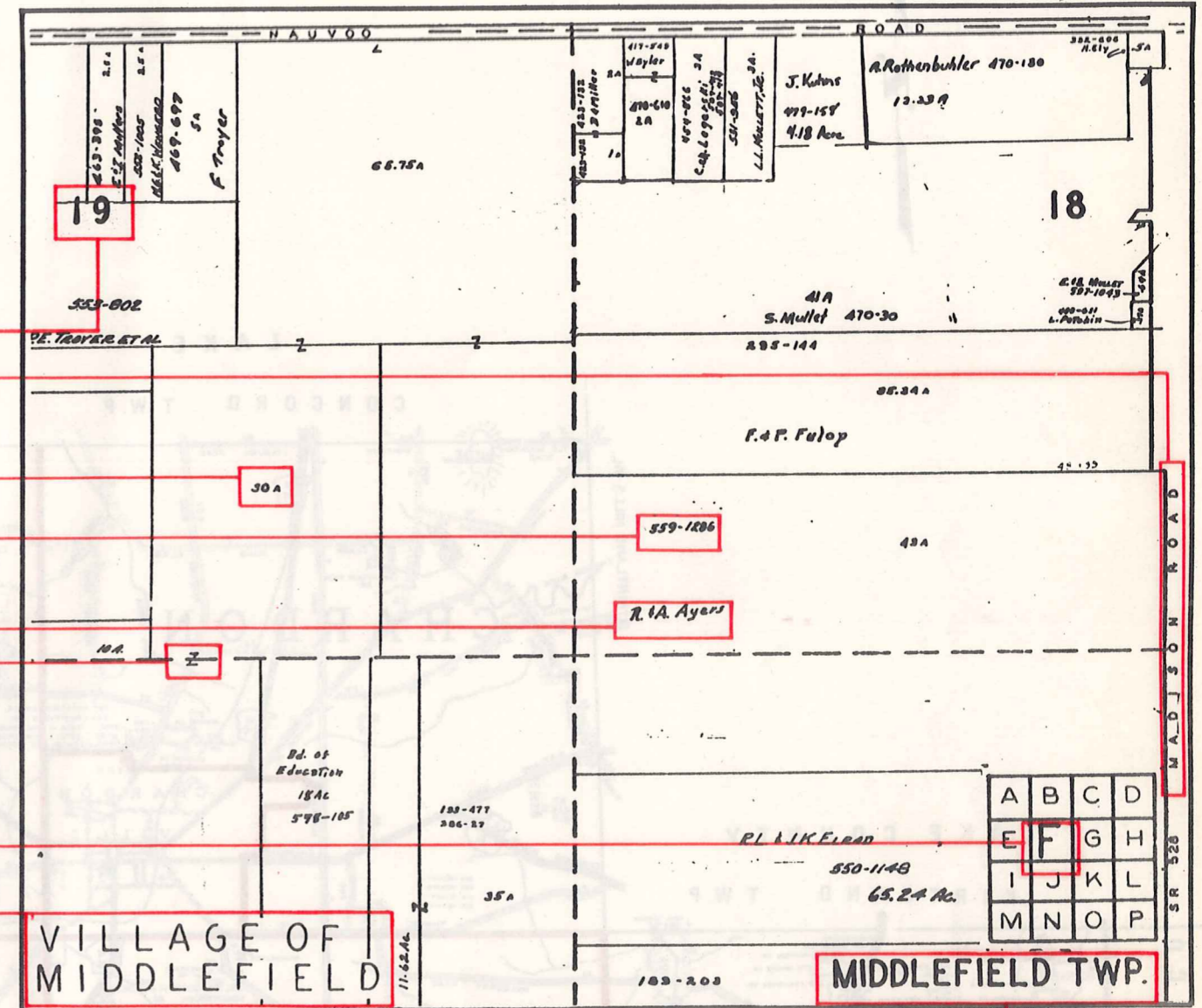
Explanation and Use Sheet for Geauga County, Ohio

SAMPLE (PARTIAL) COUNTY INDEX MAP



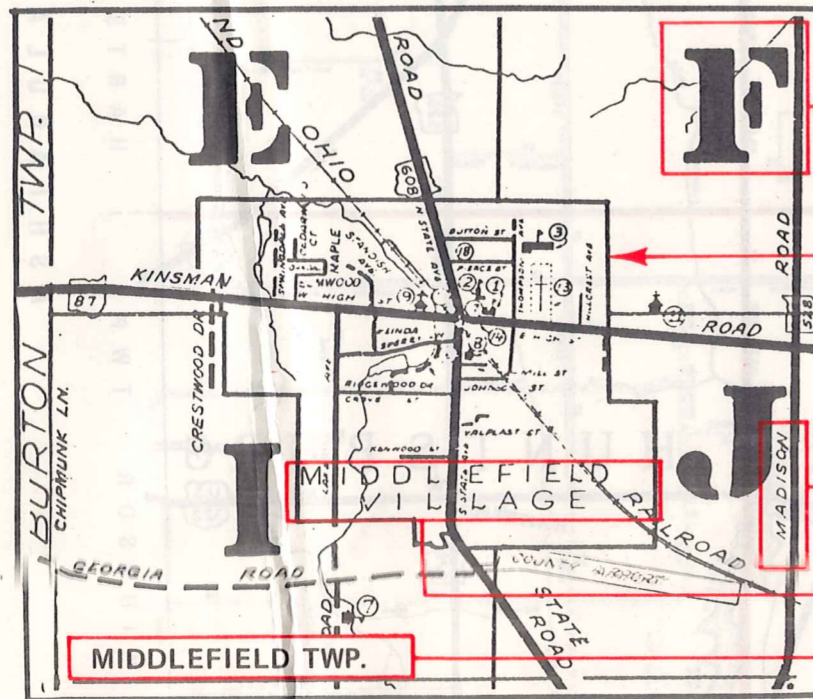
- Township Boundary
- Township Name
- Village Boundary
- Village Name
- Tract Lot Number
- Street Name
- Acreage
- Deed Book & Page
- Owners Name
- Denotes Continous Ownership

SAMPLE (PARTIAL) MAP PAGE



- Map Page Number
- Village Name
- Village Boundary
- Township Name

SAMPLE (PARTIAL) MUNICIPALITY INDEX MAP



- Street Name
- Village Name
- Township Name

USE OF THE MAP VOLUME

1. LOCATE THE GENERAL AREA OF INTEREST ON THE COUNTY INDEX MAP, ATLAS PAGE 'B', AND NOTE THE MUNICIPALITY NAME (TOWNSHIP OR VILLAGE).
2. REFER TO THE TABLE OF CONTENTS, ATLAS PAGE 'C', AND NOTE THE BEGINNING ATLAS PAGE NUMBER FOR THE MUNICIPALITY OF INTEREST.
3. TURN TO THE PAGE INDICATED. ON THIS PAGE WILL APPEAR AN INDEX MAP FOR THAT MUNICIPALITY.
4. LOCATE THE GENERAL AREA OF INTEREST AND NOTE THE MAP PAGE NUMBER. THIS MAY BE EITHER A LETTER OR A NUMBER.
5. MAP PAGES ARE IN ALPHABETICAL (OR NUMERICAL) SEQUENCE FOLLOWING THE MUNICIPALITY INDEX MAP. FOLLOW SEQUENCE TO THE MAP PAGE INDICATED.
6. LOCATE SPECIFIC PARCEL OF INTEREST AND NOTE THE DESIRED INFORMATION.

NOTE: ON SOME MAPS YOU MAY BE REFERRED TO A DETAIL SHEET SHOWING AN ENLARGEMENT OF THE AREA. THESE MAPS ARE FOUND AT THE END OF THE REGULAR MAP PAGES IN EACH MUNICIPALITY IN EITHER ALPHABETICAL OR NUMERICAL SEQUENCE.

NOTE: CHARDON VILLAGE HAS TITLE SHEETS. TO LOCATE OWNERS NAME, NOTE THE PARCEL NUMBER, REFER TO THE TITLE PAGE FOLLOWING THE MAP OF INTEREST, FOLLOW NUMERICAL SEQUENCE TO THE PARCEL NUMBER OF INTEREST AND NOTE THE DESIRED INFORMATION. IN ALL OTHER MUNICIPALITIES THE OWNERS NAME APPEARS ON THE MAP PAGE.

This book is the property of REAL ESTATE DATA, INC. and is distributed by REDI under a leasing arrangement requiring return to REDI upon termination of the lease. REDI reserves the right to reclaim this book if found in the possession of any firm or person where possession was obtained through any unauthorized source.